

CENTURY®

10 & 15 Series Carriers



Stationary headboard, removable blade rails and other optional equipment shown.

At Century, we feel that "Keeping up with the Industry" is nothing but an excuse. If we can't produce a product that is superior to everything in its class... then you won't see our name on it. Our Car Carriers are a perfect case-in-point. They possess every standard feature that you would expect from a World Leader, brought together in a sleek, attractive and durable package. With an independent wheel lift system, positive lock down, extra-low loading angle, and easy one-man operation, Century Carriers have driven past every limitation that has held "The Industry" in check. Century leaves no room for argument.



**"The Number One Selling Brand of Towing
& Recovery Equipment Worldwide."**

The tailboard features anti-theft L-Arm storage for easy access when hooking up to a second vehicle, along with large access safety chain pockets and a tow light socket. LED body lighting and stainless steel light housings give the tailboard a clean and stylish appearance.



The low-profile fabricated wheel-lift stinger provides 68" of reach. When retracted, the crossbar is tucked in close to tailboard with minimal overhang. Century's 3-Way Pivoting L-Arm System or the popular AutoGrip II crossbar are also available.



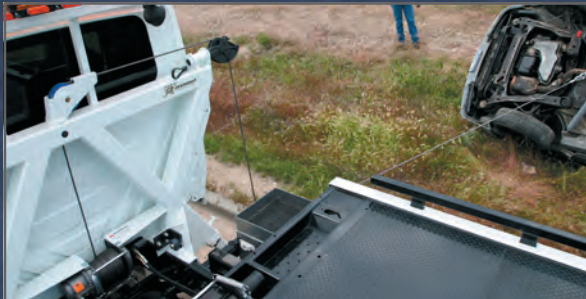
The new high tilt subframe, standard on Century 10 Series carriers, provides 18 to 20 degrees of tilt on most Class 6 chassis. The higher dump angle aids in unloading damaged vehicles more quickly and easily.



The reinforced subframe and mounting frame on a Century 10 Series carrier provide an approximately 11- to 12-degree load angle on most low-profile Class 6 chassis.



- Patented Anti-Tilt Device - Ensures the bed will not tilt until it clears the bed locks
- Positive Lock-Down - Secures the bed to the chassis frame for transport
- Inboard Mounted 3" Lift Cylinders - Allows for the unrestricted mounting of toolboxes
- LED Body Lighting - Longer light life and less amp draw
- One Piece Tread Plate - Eliminates unsightly weld seams and the potential for damaged vehicles and equipment to get hung up on welds; smooth floor available at no charge.



The unique design of the SP 8000 Sidepull allows the operator to use the removable sheave head on either side or winch directly from the center pivoting sheave. The center sheave is able to pivot 180 degrees, allowing you to winch in any direction behind the cab, even straight onto the carrier deck.



CENTURY

Legendary

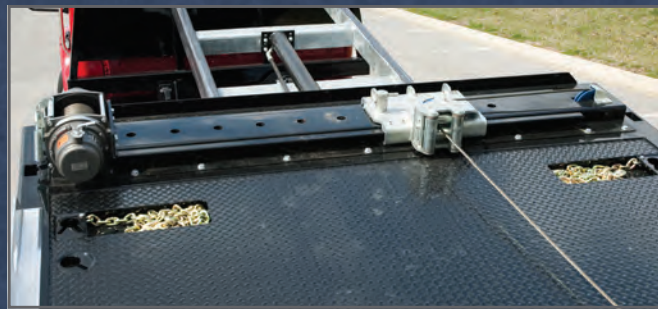


The Right Approach option available on Century 10 Series steel carriers eliminates the need for wood planks or ramps when loading and unloading low-clearance vehicles. The release handle allows the rear hinged deck section to be lowered to a 6-degree load angle. A removable cable guide is inserted in the deck to keep the cable low while winching the vehicle onto the rear deck.





The Side Mount Winch allows the operator to easily adjust a sliding pulley assembly into nine different positions for a straight line pull when loading vehicles with screw-in tow eyes or hooks. The option is available with a 9,000- or 12,000-lb. planetary winch on steel carriers and requires a stationary cab protector or the SP 8000 Sidepuller option.



- Multiple Fixed and Removable Side Rail Options to meet your specific requirements
- 8" On Center Crossmembers - Gives you a stronger, more durable bed.
- 11 Key Slots on Steel Decks - Allows for multiple tie-down options when securing loads.
- 210" Subframe - Allows for maximum overlap for strength and stability
- Dual Trays - Separates electrical harness from hydraulic hoses for longer life and serviceability.



The optional hot dip galvanized subframe assembly includes the control stations, taillight housings and the wheel lift outer boom, providing additional corrosion prevention from salt and road spray.



The AutoGrip II self-loading wheel lift option operates from the control stations of the carrier by lowering the wheel lift, opening the claws and extending the crossbar until it comes into contact with the towed vehicle's tires. The claws are then closed and the vehicle is ready to be lifted.

CENTURY[®]

Leadership



As the cost of fuel, parts, labor and general maintenance increases you need to maximize your equipment's payload per mile. Century's 3-Car Carrier combines a 10 Series Steel or Aluminum carrier and wheel lift with an over-the-cab rack for the perfect package in multi-vehicle hauling.



After the vehicle's front wheels are on the carrier, the deck can be leveled out and the cable guide removed, allowing the vehicle to overcome the second clearance problem with the forward section of the deck. With the front wheels on the front section of the deck, the process can be repeated again to eliminate clearance problems such as low exhaust or extended rear overhang.



STANDARD FEATURES

- Platform Available in Aluminum or Steel
- Floor Level Sides with Stake Pockets (Steel)
- Tri-Hollow Tube Rails (Alum.)
- Consolidated Tilt & Full Length Mounting Frame
- Right and Left Chain Trays
- Safety Chains (2 front, 2 rear)
- Painted in Black Acrylic Urethane (Steel Only)
- Left & Right Side Illuminated Controls
- Federal Standard #108 LED Lighting
- 8,000-lb. Hydraulic Winch w/50' Cable
- Full Function Wheel Lift System
- Slide-In L-Arms With Anti-Theft Storage
- Pre-Wired Electrical Junction Box
- Back-Up Lights & Alarm
- Adjustable Rear Stabilizer
- Bed Built 96" Wide
- 5 Key Slots on Tailboard (Steel)
- 4 Key Slots on Tailboard (Alum.)
- Full Length Slide Pads
- Bed Anti-tilt Lockout
- Positive Lock-down
- Two Lift Cylinders
- One Extension Cylinder
- Winch Clutch Release
- Cable Tensioner
- Cable Roller Guide
- Tow Light Socket
- Mud Flaps
- Hydraulic Pump

OPTIONAL FEATURES

- Frame Mounted Headboard (Req. 6" Additional CA)
- Smooth Floor in lieu of Tread Plate (Steel, N/C)
- Optional Color on Top of Deck and Side Rails (Steel)
- 6" on Center Crossmember Spacing (Steel)
- Solid Tube Side Rails (Steel, N/C)
- Solid Narrow Profile Rails (Alum., N/C)
- Steel Removable Tube Rails*
- Aluminum Removable Blade Rails
- Aluminum Removable Tube Rails*
- Aluminum Overlay Siderails*
- Work Lights (Rear, Pylon or Winch Mounted)
- 3-Way Pivoting L-Arm System
- Dock Stabilizer in lieu of Wheel Lift
- Wired or Wireless Winch Remote
- Steel or Aluminum Tool Compartments
- Various Chain & Strap Assemblies
- Optional Planetary Winch (Req. for 3-Car)
- SST™ - Solid Sloped Tail Section
- Bed Mounted Headboard
- Bed Built 102" Wide
- Galvanized Subframe
- SP 8000 Sidepuller
- Wood Floor*
- Rubber Flooring*
- PTO
- Switch Panel
- Emergency Lighting
- Auto-Grip Wheel Lift
- 11 Key Slot Package (Steel)
- 8 Key Slot Package (Alum.)
- Additional Key Slots
- Side Mount Winch (Steel)
- Outboard Lift Cylinders* (Required for chassis with mid-ship fuel tanks)

*N/A on the Right Approach and SST™

CAB TO AXLE (C.A.) REQUIREMENTS

SP 8000 Sidepuller Add 12"
Frame-Mounted Headboard Add 6"
19' 120"
19' 6" 127"
21' 144"
22' 156"
21' 3-Car 154"
22' 3-Car 166"

OVER-THE-CAB RACK (3-CAR)

Load Rating *5,000 lbs.
Platform Length 13'6"
Platform Width: Inside Rails 97"
Outside Rails 101"
Winch Rating 8,000 lbs.
Cable 3/8" x 75'

* Platform rating is based on equally distributed load.

NOTE: All ratings are based on structural factors only, not vehicle capacities or capabilities. Specifications shown are approximations and may vary depending on chassis selected. Platform rating is based on an equally distributed load. Actual payload carrying capacity is determined by the curb weight of the chassis and equipment and should not exceed the GVWR of the chassis. Miller Industries Towing Equipment Inc. reserves the right to change or modify product and or specifications without notice or obligation. Some equipment shown is optional.

BED SPECIFICATIONS

	10 SERIES	15 SERIES
Load Rating *	10,000 lbs.	15,000 lbs.
Platform Length †	19', 19'6", 21', 22'	19', 21', 22'
Platform Thickness	3/16"	3/16"
Platform Width (Outside)	96"	96"
Platform Width (Inside)**	91.5"	91.5"
Steel Crossmembers	2" x 2" on 8" Centers	2.5" x 2.5" on 8" Centers
Alum. Crossmembers	2.25" on 4" Centers	3" on 4" Centers

* Platform rating is based on equally distributed load.

† 10 Series 3-Car Carrier is available in 21' & 22' deck lengths

** Inside bed widths will vary based on siderail option

Winch (1st Layer) 8,000 lb. 8,000 lb.
Cable 3/8" x 50' 3/8" x 50'
Wheel Lift Rating * 3,000 lbs. 3,500 lbs.
Tow Rating at Full Extension** 6,250 lbs. 6,250 lbs.

* 10 Series - 2,000 lbs. for chassis under 19,000 GVWR

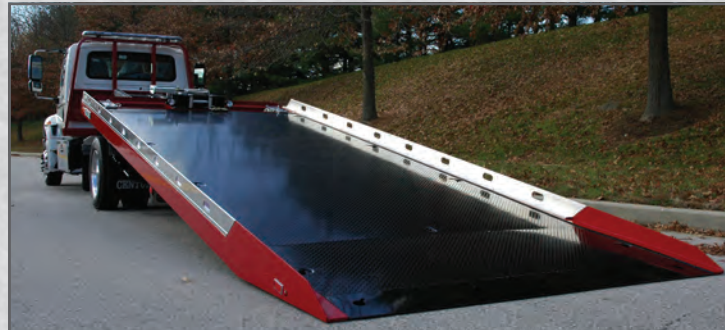
** 10 Series - 5,000 lbs. for chassis under 19,000 GVWR

CHASSIS REQUIREMENTS

	10 SERIES	15 SERIES
Minimum GVWR *	15,000 lbs.	25,500 lbs.
Maximum GVWR *	25,500 lbs.	28,000 lbs.
Recommended Tire Size	16" - 19.5"	22.5"
Minimum Frame Height	34"	38"
Maximum Frame Height	39"	42"
Minimum Frame Length Behind Center of Rear Axle 36" 36"

* A 10 Series 3-Car Carrier requires 29,000 lb. GVWR, with a 10,000-lb. front axle.

NOTE: The outside frame rails of the chassis extending behind the cab must be free of fuel tanks, air tanks, battery boxes, exhaust stacks, etc.



The innovative SST™ option provides a Solid Sloped Tail section that improves the load angle by 3 1/2 degrees.

SP 8000 RATINGS & FEATURES

Boom 8,000 lbs.
Winch 9,000 lbs.
Stiff Leg 8,000 lbs.

- Eight Tie-Back Points
- Multi-Positional Flipper Feet
- 9,000-lb. Planetary Winch
- Winch Tensioner & Free-Spool
- Wire Rope - 3/8" x 100'
- Hydraulic Stiff Legs
- Center Pivoting Boom Head
- Removable Outer Boom Head
- Painted in Flat Black

SP 8000 OPTIONAL FEATURES

- Wired or Wireless Winch Control
- Lightbar Mount

Miller
INDUSTRIES

©2010 Miller Industries Towing Equipment Inc. All Rights Reserved

ZIP'S TRUCK
EQUIPMENT INC.
800-222-6047 www.zips.com

DISTRIBUTED BY: