

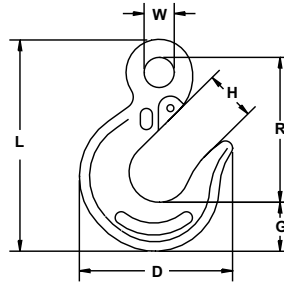


# EYE SLIP HOOK GRADE 63/70

**WORKING LOAD LIMIT: 2,750 TO 14,200 LBS.**

## BENEFITS & FEATURES

- Designed specifically for transport Grade 70 chain
- Design factor 4:1
- Hook embossed with trace code providing traceability throughout the manufacturing and testing process to heat of steel
- Durable orange powder coated finish



| Size (in.) | Working Load Limit (lbs.) |          | Standard Package | Product Code |               |           | Dimensions (in.) |      |      |      |      |      | Weight (lbs.) |
|------------|---------------------------|----------|------------------|--------------|---------------|-----------|------------------|------|------|------|------|------|---------------|
|            | Grade 63                  | Grade 70 |                  | With Latch   | Without Latch | Latch Kit | W                | D    | H    | L    | R    | G    |               |
| 1/4        | 2,750                     | 3,150    | 20               | M6304WL      | M6304         | 4X1302    | 0.55             | 2.69 | 0.87 | 3.80 | 2.62 | 0.87 | 0.45          |
| 5/16       | 3,600                     | 4,700    | 20               | M6305WL      | M6305         | 4X405     | 0.63             | 3.18 | 1.01 | 4.41 | 3.01 | 1.03 | 0.58          |
| 3/8        | 5,500                     | 6,600    | 20               | M6306WL      | M6306         | 4X406     | 0.80             | 3.74 | 1.17 | 5.38 | 3.73 | 1.25 | 1.40          |
| 7/16       | 7,100                     | 8,750    | 10               | M6307WL      | M6307         | 4X410     | 0.83             | 4.34 | 1.42 | 5.79 | 3.93 | 1.38 | 1.50          |
| 1/2        | 9,400                     | -        | 10               | -            | M308A         | -         | 0.95             | 4.94 | 1.76 | 6.33 | 4.31 | 1.50 | 2.30          |
| 5/8        | 14,200                    | -        | 5                | -            | M310A         | -         | 1.19             | 5.63 | 2.00 | 7.67 | 5.29 | 1.69 | 3.77          |