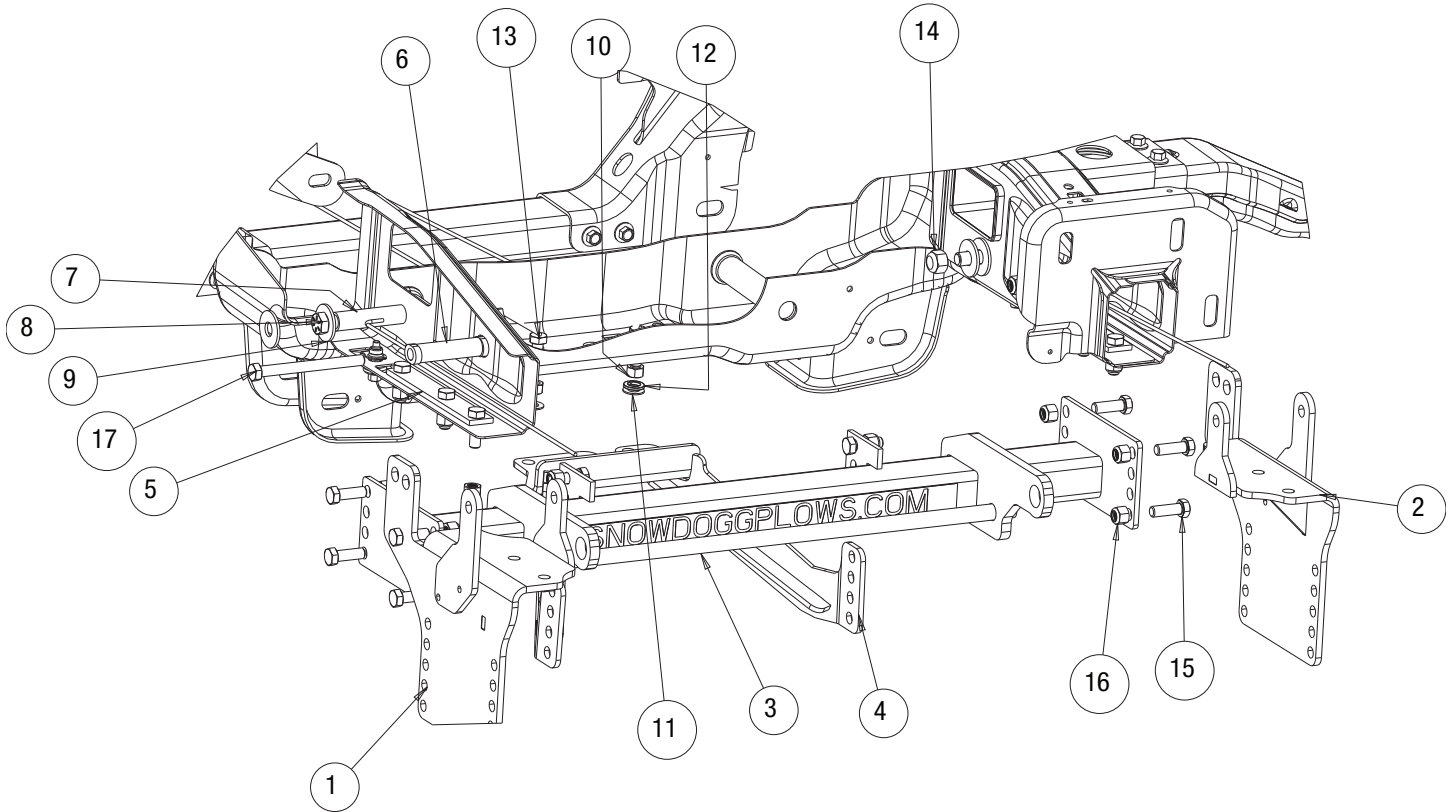


MD MOUNT KIT 16061145 FORD '15+ F150



SnowDogg® Snowplow

TRUCK MOUNT INSTALLATION MANUAL

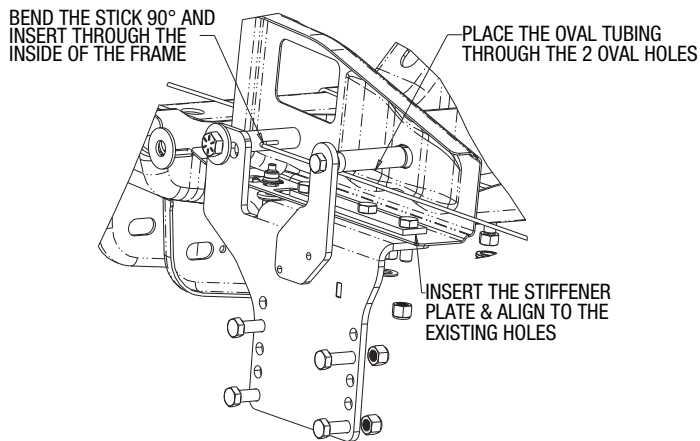


Parts List

ITEM	PART NO.	QTY.	DESCRIPTION
1	16061146	1	SIDE PLATE, PS
2	16061147	1	SIDE PLATE, DS
3	16061148	1	PUSHBAR, F150 14+, MD
4	16061149	1	CTR BRACKET, 2015 F150
5	3027596	2	STIFFENER, PLATE SPACER
6	3027606	2	SPACER TUBING, OBLONG WASHER
7	3027607	2	SPACER TUBING, ON STICK
8	FCS063011550Z	2	SCREW, HH CAP, 5/8-11 X 5.5 GR. 8 ZN SPCL
9	3000144	6	WASHER, FL - 5/8 USS ZN
10	3006201	2	NUT, 1/2-13 HEX GR. 8 ZP
11	FWF050106010	2	WASHER, FLAT, 1/2" SAE, ZN
12	FWL050088013	2	WASHER, LOCK - 1/2 SPLIT ZN
13	16801004	2	SCREW, HEX HD, 1/2-13x1-1/2 GR 5 W/HDL
14	3001247	2	NUT, HEX NYLOCK 5/8-11 SST
15	3006202	18	SCREW, HEX HD - 1/2-13 X 1-1/2 GR 8 ZC
16	3002397	20	LOCKNUT, HEX NYLOCK, 1/2-13 ZN, G8
17	FCS050013550	2	SCREW, HHC-1/2-13 X 5 1/2 GR5 ZN

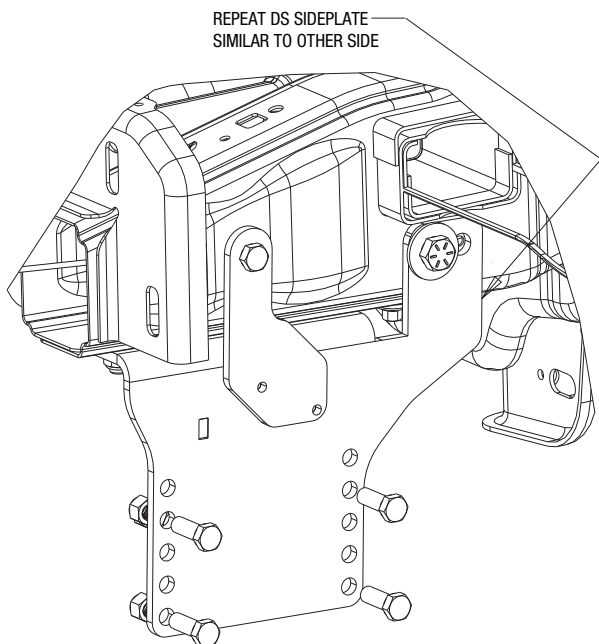
INSTRUCTIONS

1. Remove the bumper by first removing the frontal obstacle grill covering/hiding the few bumper bolts within. Set the bumper aside for later re-installation. Remove the plastic mud guard/air dam from the cross-member.
2. Remove the Passenger Side Tow Hook Bolts and set aside.
3. Insert the oval spacer tubing into the oval holes through the frame. Align the PS sideplate to the existing three holes from the bottom of the frame. The two large oval holes on the side will line up automatically. Secure it

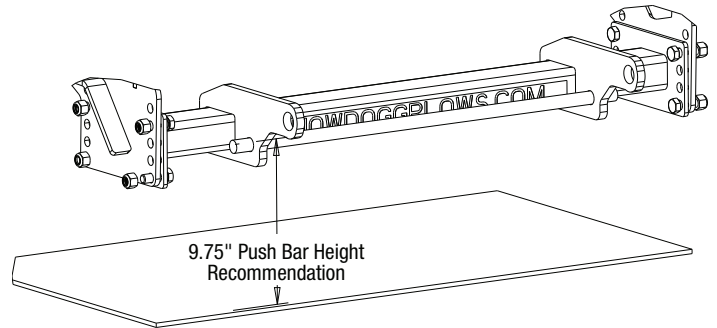


with a long 1/2 bolt through the frame.

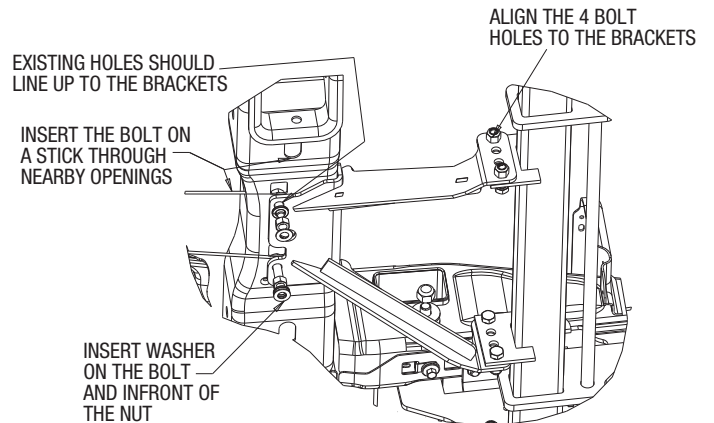
4. From the inside of the frame, insert the Stiffener spacer and aligning it to the 3 existing holes to from the bottom of the frame. Secure the 3 holes with the 1/2 lock nuts.
5. Bend the stick on the spacer tubing 90deg. While holding a stick, insert the tubing through the inside of the frame and align it to the two holes in the rear of the frame. Secure it with a 5/8 bolt and nut.
6. Repeat step 1-5 for DS sideplate.






7. Install the pushbar between the two side plates just installed. Secure it with eight 1/2 bolts and nuts provided. Adjust the pushbar up and down. The center line of the push bar Cross Pin should be approximately 9.75" from the level ground. It is necessary to notch/remove the plastic air damp to acquire a desired height.



8. Install the center bracket onto the pushbar aligning them to the 4 holes on the bracket. Secure the bracket onto the pushbar with four 1/2" bolts and nuts.



9. On the cross-member of the truck, find a nearby opening and insert the bolt stick with washer through the frame & aligning onto the two existing holes shown. Secure it with two 1/2" free nuts & washers.
10. Torque all fasteners as shown in the chart. Check and re-torque all fasteners after 5 hours of usage to ensure safe plow operation. Ensure all coolant lines and wires are clear from moving or hot components. Re-install mud-guard and tow hook foam removed earlier. Modification is necessary for re-installation of the mud-guard.

Recommended Fastener Torque Chart (ft.-lb.)			
Size	 SAE Grade 2	 SAE Grade 5	 SAE Grade 8
1/4-20	6	9	13
5/16-18	11	18	28
3/8-16	19	31	46
3/8-24	24	46	68
7/16-14	30	50	75
1/2-13	45	75	115
9/16-12	66	110	165
5/8-11	93	150	225
3/4-10	150	250	370
7/8-9	150	378	591
1-8	220	583	893
Metric Grade 8.8 (ft.-lb.)			
Size	Torque	Size	Torque
M6	7	M12	60
M8	17	M14	95
M10	35	M16	155
These torque values apply to fasteners except those noted in the instruction.			

WARNING

- DO NOT under any circumstances disable, remove or relocate any sensors or components related to the operation of the air bags.
- Always follow the vehicle manufacturers' recommendations relating to snowplow installation.
- To comply with Federal Regulations and to assure a safe vehicle, the Front Gross Axle Weight Rating (FGAWR), Rear Gross Axle Weight Rating (RGAWR), and the Gross Vehicle Weight Rating (GAWR) must not be exceeded at any time.
- Due to the variety of equipment that can be installed on this vehicle, it is necessary to verify that the Front Gross Axle Weight Rating (FGAWR), Rear Gross Axle Weight Rating (RGAWR), and the Gross Vehicle Weight Rating (GAWR) are not exceeded at any time. This may require weighing the vehicle and adding ballast as necessary. It may also limit payload capacity of the vehicle. It is the operator's responsibility to verify that these ratings are not exceeded.

CAUTION

- Read all instructions prior to assembly
- It is critical that all fasteners be properly torqued for safe plow operation – see chart above.
- Fasteners should be retorqued after 5-8 hours of plow use

FULL ONE-YEAR WARRANTY

Manufacturer will repair, or at manufacturer's discretion will replace any part of this snowplow which proves to be defective in workmanship or material under normal use for a period of one year from the date of delivery to the original purchaser. Any cost incurred in returning the product to the supplier is the responsibility of the consumer.

EXCLUSIONS

Manufacturer shall not be liable for special, incidental, or consequential damages, or for damages resulting from lack of necessary maintenance, from misuse, abuse, acts of God, or alteration of the product. Some states do not allow the exclusion or limitation of incidental or consequential damages, so the above limitation or exclusion may not apply to you.