

MOUNT KIT

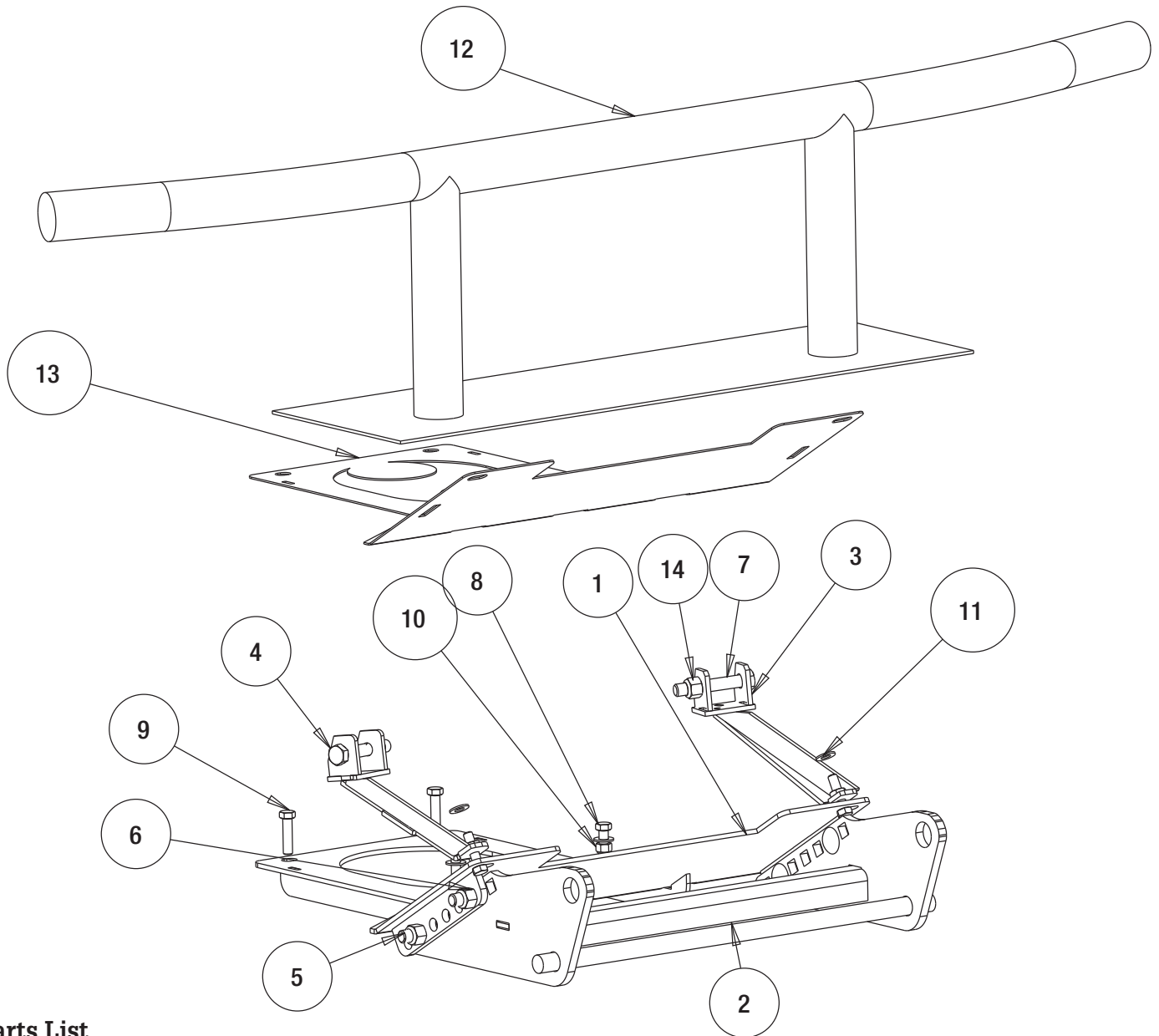
16067800

2011+ JOHN DEERE GATOR XUV



SnowDogg® Snowplow

TRUCK MOUNT INSTALLATION MANUAL



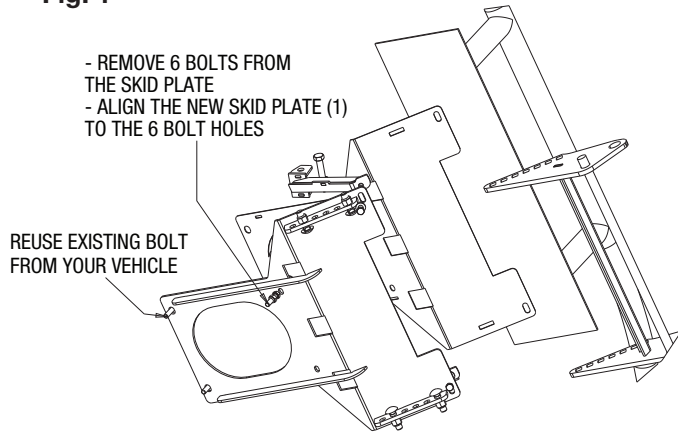
Parts List

ITEM	PART NO.	QTY.	DESCRIPTION
1	16067801	1	SKID PLATE, GATOR WLDMENT
2	16067802	1	PUSHBAR, GATOR UTV
3	16067803	1	REAR BRACE, DS, SKID PLATE
4	16067804	1	REAR BRACE, PS, SKID PLATE
5	3029357	4	BOLT, CARRIAGE 1/2-13 X 1.75 GR8 ZN
6	3002397	6	LOCKNUT, HEX NYLOCK, 1/2-13 ZN, G8
7	3035680	2	SCREW, HHC-1/2-13 X 3 GR8 ZN
8	3035681	4	SCREW, HX HD CAP 3/8-16 X 1-1/2 G8 ZN
9	EXIST_BOLT	2	SCREW, HX HD CAP 3/8-16 X 1-1/2 G5 ZN
10	FNE038016044	2	NUT, NYLOCK 3/8-16 X 7/16 ZINC
11	FWF038081006	4	WASHER, FLAT 3/8 SAE ZINC
12	16067800-FRAME1	1	FRONT BUMPER
13	16067800-FRAME2	1	SKID PLATE, UNDER BOTTOM
14	3029359	2	NUT, HEX, FLANGE GR8

INSTRUCTIONS

1. Remove four bolts from the vehicle front skid plate holding the bumper together. Remove the two bolts from the rear frame assembly (Fig. 1).

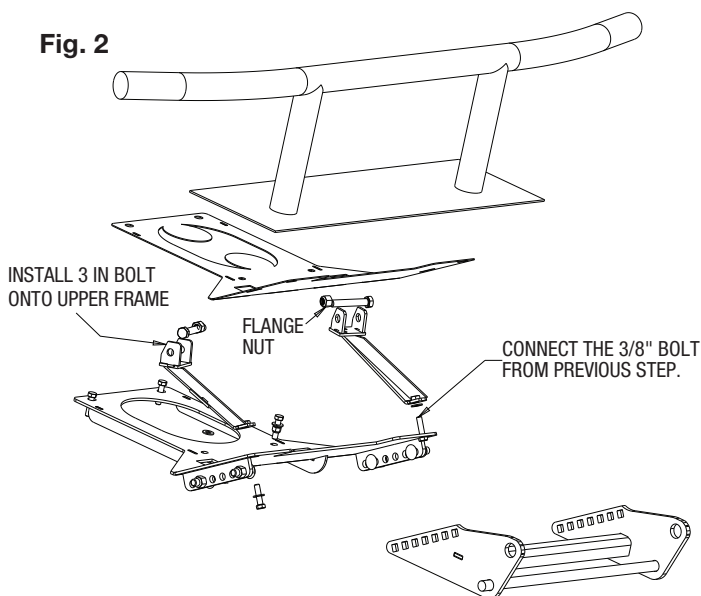
Fig. 1



2. Position the Skid Plate (1) over the existing skid plate from the vehicle. Secure the six 3/8x16x1.5 bolts (8) onto the same location you just removed the six bolts previously. Existing holes may have to be opened up for 3/8" bolt.

3. Remove the two upper existing nuts & bolts holding the bumper to frame assembly. Install the PS & DS (3 & 4) Rear Brace onto the frame with two 1/2"-13x 3" bolts (7) and two nuts (6) (Fig. 2).

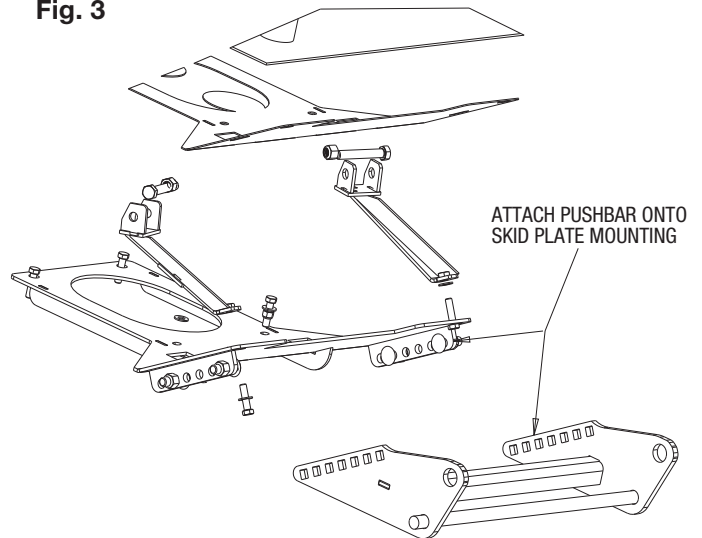
Fig. 2






4. Connect the bottom bolt of the skid plate to the newly installed rear bracket (3 & 4).

5. Attach the Pushbar bracket to the Skid Plate and adjust it to a desired height of about 11" from the floor. Secure with four carriage bolts (5) and four nuts (6) (Fig. 3).

Fig. 3



6. Torque all fasteners as shown in the chart. Check and re-torque all fasteners after 5 hours of usage to ensure safe plow operation.

Recommended Fastener Torque Chart (ft.-lb.)			
Size	 SAE Grade 2	 SAE Grade 5	 SAE Grade 8
1/4-20	6	9	13
5/16-18	11	18	28
3/8-16	19	31	46
3/8-24	24	46	68
7/16-14	30	50	75
1/2-13	45	75	115
9/16-12	66	110	165
5/8-11	93	150	225
3/4-10	150	250	370
7/8-9	150	378	591
1-8	220	583	893
Metric Grade 8.8 (ft.-lb.)			
Size	Torque	Size	Torque
M6	7	M12	60
M8	17	M14	95
M10	35	M16	155
These torque values apply to fasteners except those noted in the instruction.			

WARNING

- DO NOT under any circumstances disable, remove or relocate any sensors or components related to the operation of the air bags.
- Always follow the vehicle manufacturers' recommendations relating to snowplow installation.
- To comply with Federal Regulations and to assure a safe vehicle, the Front Gross Axle Weight Rating (FGAWR), Rear Gross Axle Weight Rating (RGAWR), and the Gross Vehicle Weight Rating (GAWR) must not be exceeded at any time.
- Due to the variety of equipment that can be installed on this vehicle, it is necessary to verify that the Front Gross Axle Weight Rating (FGAWR), Rear Gross Axle Weight Rating (RGAWR), and the Gross Vehicle Weight Rating (GAWR) are not exceeded at any time. This may require weighing the vehicle and adding ballast as necessary. It may also limit payload capacity of the vehicle. It is the operator's responsibility to verify that these ratings are not exceeded.

CAUTION

- Read all instructions prior to assembly
- It is critical that all fasteners be properly torqued for safe plow operation – see chart above.
- Fasteners should be retorqued after 5-8 hours of plow use

FULL ONE-YEAR WARRANTY

Manufacturer will repair, or at manufacturer's discretion will replace any part of this snowplow which proves to be defective in workmanship or material under normal use for a period of one year from the date of delivery to the original purchaser. Any cost incurred in returning the product to the supplier is the responsibility of the consumer.

EXCLUSIONS

Manufacturer shall not be liable for special, incidental, or consequential damages, or for damages resulting from lack of necessary maintenance, from misuse, abuse, acts of God, or alteration of the product. Some states do not allow the exclusion or limitation of incidental or consequential damages, so the above limitation or exclusion may not apply to you.