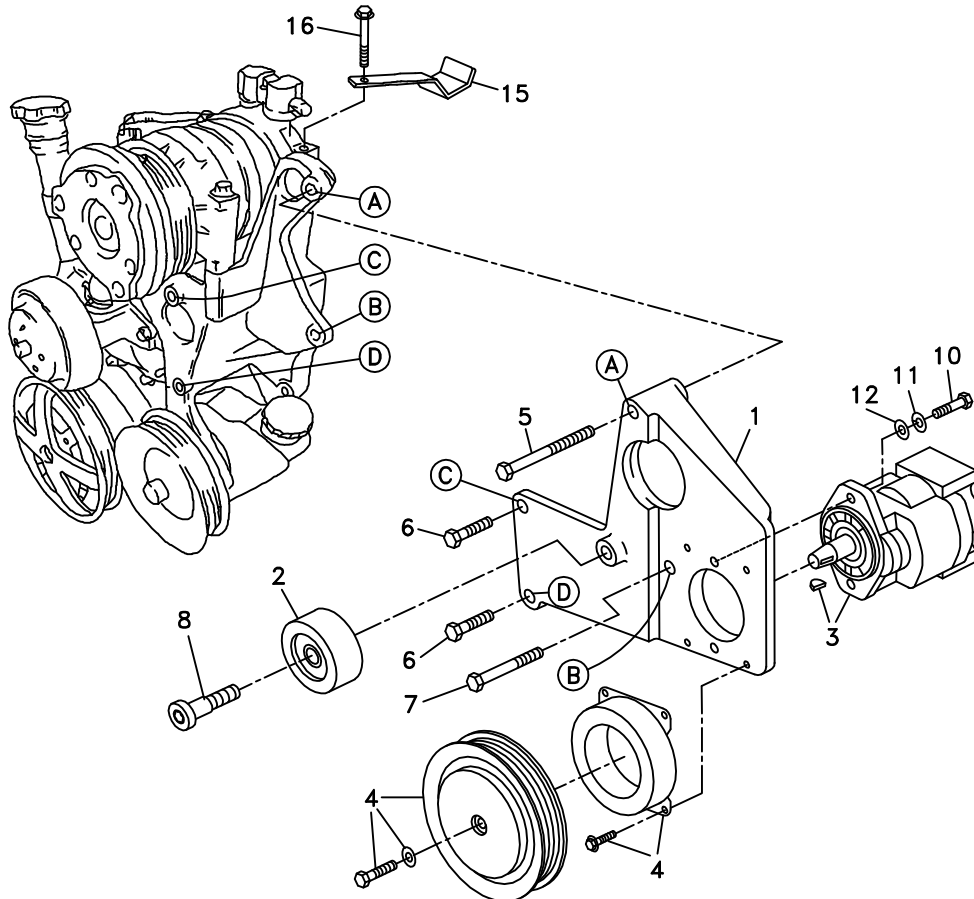


-----	Bracket Assy. (See item 1)		Kit No.	700336
711105	Bracket Bolt Pkg. (Inc. items 5-7, 9)		Make	Chevy
None	Pulley Bolt Pkg.		Engine	6.5L
None	Idler Bolt Pkg.		Fuel	Diesel
None	Fan Spacer Bolt Pkg.		Year	1997
			Equipment	Turbo
			Revised	A 1-7-99

ITEM	PART #	DESCRIPTION
1.	711101	Pump mount bracket
2.	740151	Idler pulley/3.00" O.D., .668" I.D.
3.	*	Pump
4.	740144	Clutch/6-groove, 6.00" serp.
5.	110113	M10 x 90 x 1.5 Bolt
6.	110479	M10 x 30 x 1.5 Bolt
7.	110217	M10 x 70 x 1.5 Bolt
8.	110213	M10 Torx head shoulder bolt
9.	-----	-----
10.	110425	3/8NC x 1 1/4 Bolt
11.	110672	3/8 Lock washer
12.	110676	3/8 Flat washer
13.	-----	-----
14.	740206	Belt/Micro-V K061140
15.	711001	Hose holder
16.	OEM	Bolt
17.	110080	M8 x 35 x 1.25 Bolt
18.	711207	Spacer/.625" Long

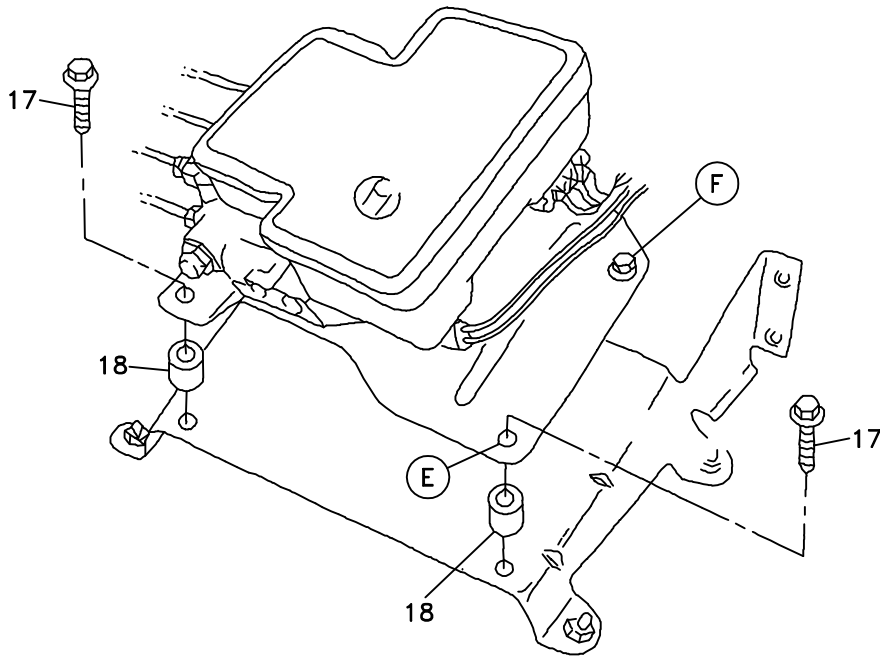
* See master list for pump part no.

FIG. 1



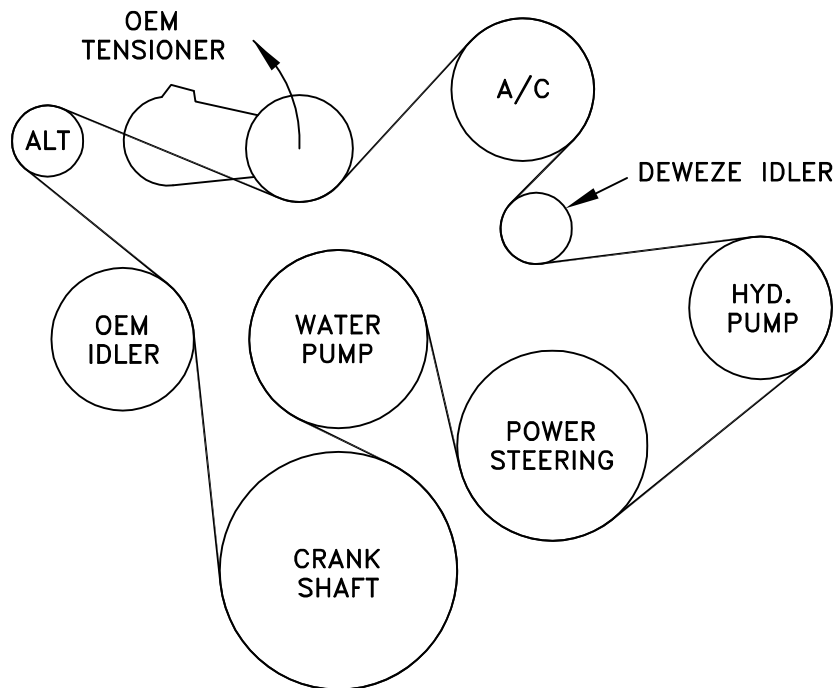
(A),(B),(C)... Denotes bolt holes in engine to locate corresponding holes in Pump Brkt.

FIG. 2



BELT DIAGRAM

FIG. 3



DewEze

Clutch Pump Kit
#700336
Chevy 6.5L
1997-98

INSTALLATION INSTRUCTIONS

NOTE: Suction hose to pump must be a wire braid hose; minimum 1" I.D. for 7 & 9 GPM pumps, 1-1/4" I.D. for 12 & 17 GPM pumps. Installations with smaller suction hoses will void the pump warranty.

Refer to Fig. 2 for the following:

1. Locate ABS control module on inner fender on driver's side. Remove two OEM bolts from engine side of ABS control module (location E). These bolts will not be used again. Loosen two bolts at outer side of ABS module (location F).
2. Place .625" spacer (18) between ABS module mounting plate and the fender bracket at location E. Thread M8 x 35 bolt (17) through plate and into fender bracket. Tighten all bolts.

Refer to Fig. 1 for the following:

3. Disconnect battery.
4. Mount pump bracket (1) to air conditioner/power steering bracket using an M10 x 90 metric bolt (5) at Location A, an 10 x 70 metric bolt (7) at Location B, and M10 x 30 metric bolts (6) at Locations C and D.
5. Mount idler pulley (2) to mounting boss on pump bracket with M10mm Torx head shoulder bolt (8).
6. Attach pump (3) to back of pump plate using two 3/8 x 1 1/4 bolts (10), 3/8 lock washers (11), and 3/8 flat washers (12).
7. Bolt clutch coil (4) onto front of bracket using flange bolts supplied with clutch. Bolt clutch pulley onto pump shaft using bolt and washer provided with clutch.
8. Put on the belt (14) as shown in Fig. 3.
9. Connect battery.
10. Run the engine and check for any clearance or alignment problems. Adjust as needed.