

Bracket Assy.	None
Bolt Packages:	
Bracket	711584 (Inc. items 7, 12, 13, 16)
Pulley	None
Idler	None
Tensioner	None

Make	Ford	
Engine	6.0L	
Fuel	Diesel	
Year	2003-	
Equipment	Turbo, w/ and w/o A/C	
Revised	F	4-3-06

Item	Part No.	Description
------	----------	-------------

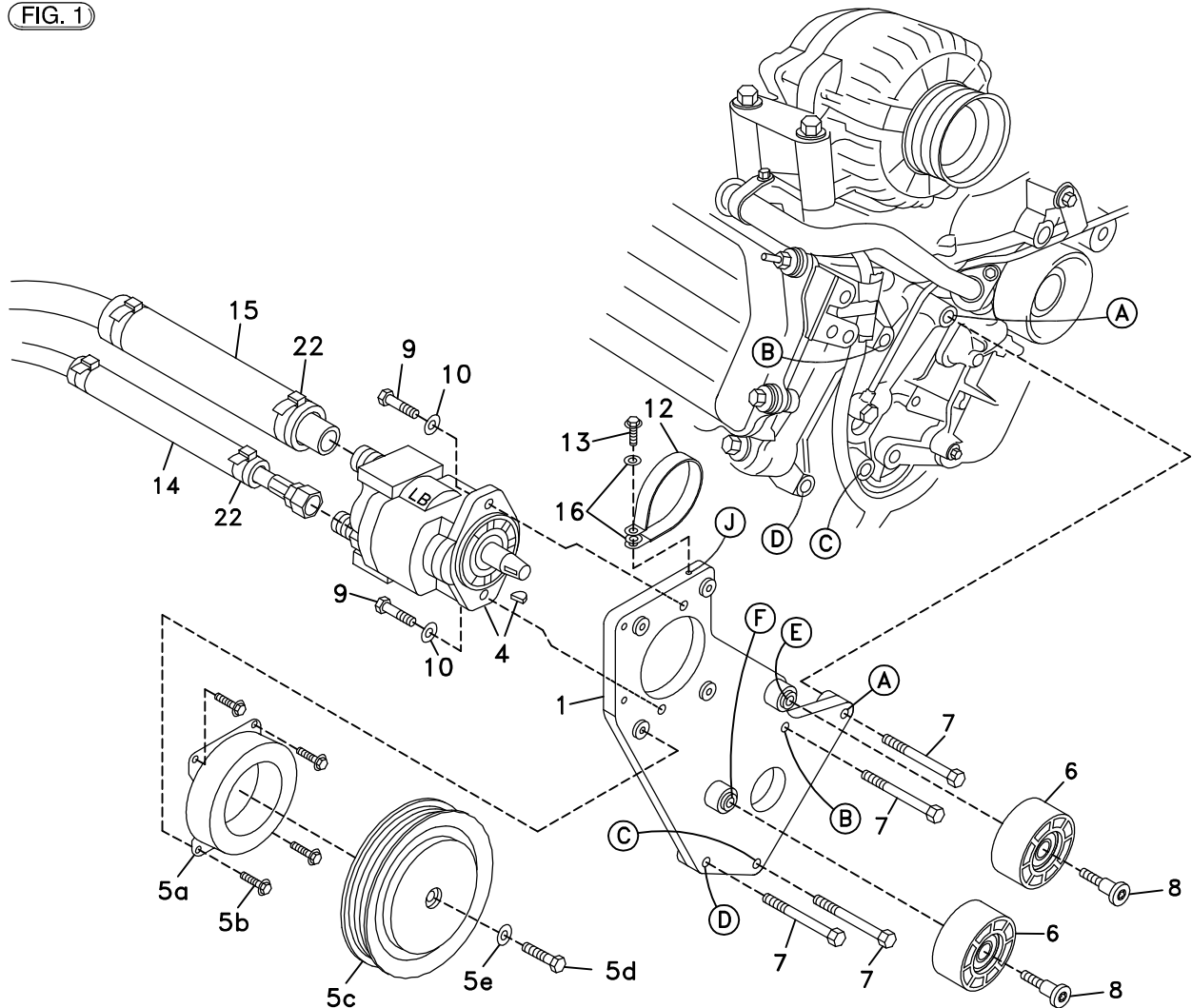
1.	711575	Pump mount bracket	12.	102024	Vinyl clamp, 2 1/2"
2.	-----	-----	13.	710586	1/4 x 1 Self tap screw
3.	700272	Intercooler tube	14.	**	Insulation, pressure hose
4.	*	Pump	15.	**	Insulation, suction hose
5.	742009	Clutch	16.	110673	1/4 Flat washer
6.	740261	Idler pulley	17.	740360	Belt, Poly-Cog 1490K8
7.	110488	M10 x 45 x 1.5 Bolt	18.	-----	-----
8.	110213	M10 x 40 Torx head shoulder bolt	19.	-----	-----
9.	110425	3/8-16 x 1 1/4 Bolt	20.	-----	-----
10.	110676	3/8 Flat washer	21.	-----	-----
11.	-----	-----	22.	100578	Cable tie

* See master list for pump part number

** Hose sizes depend on the pump size. Hose insulation diameter depends on the hose size.

The smaller diameter insulation goes on the pressure hose, and the larger diameter insulation goes on the suction hose.

FIG. 1



(A),(B),(C)... Denotes bolt holes in engine to locate corresponding holes in Pump Brkt.

FIG. 2

COMPONENT PLACEMENT AND MODIFICATION

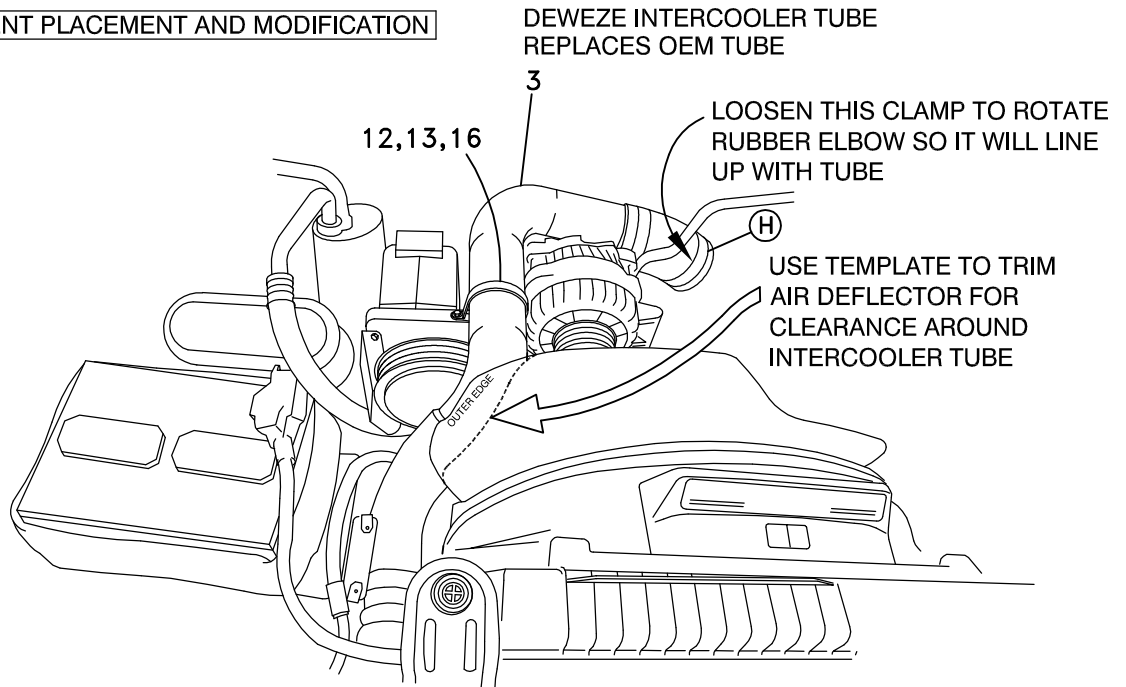
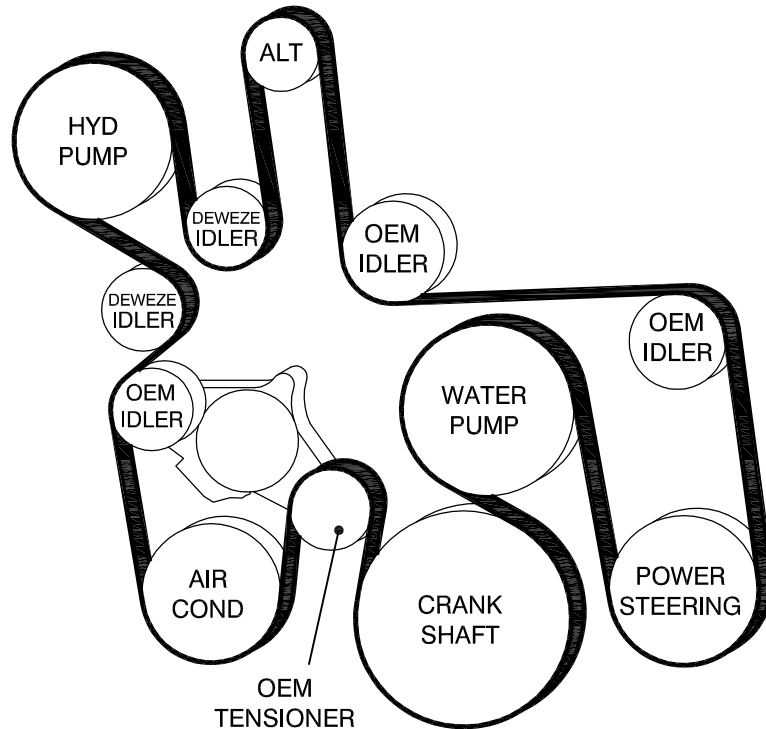


FIG. 3

BELT DIAGRAM



DewEze

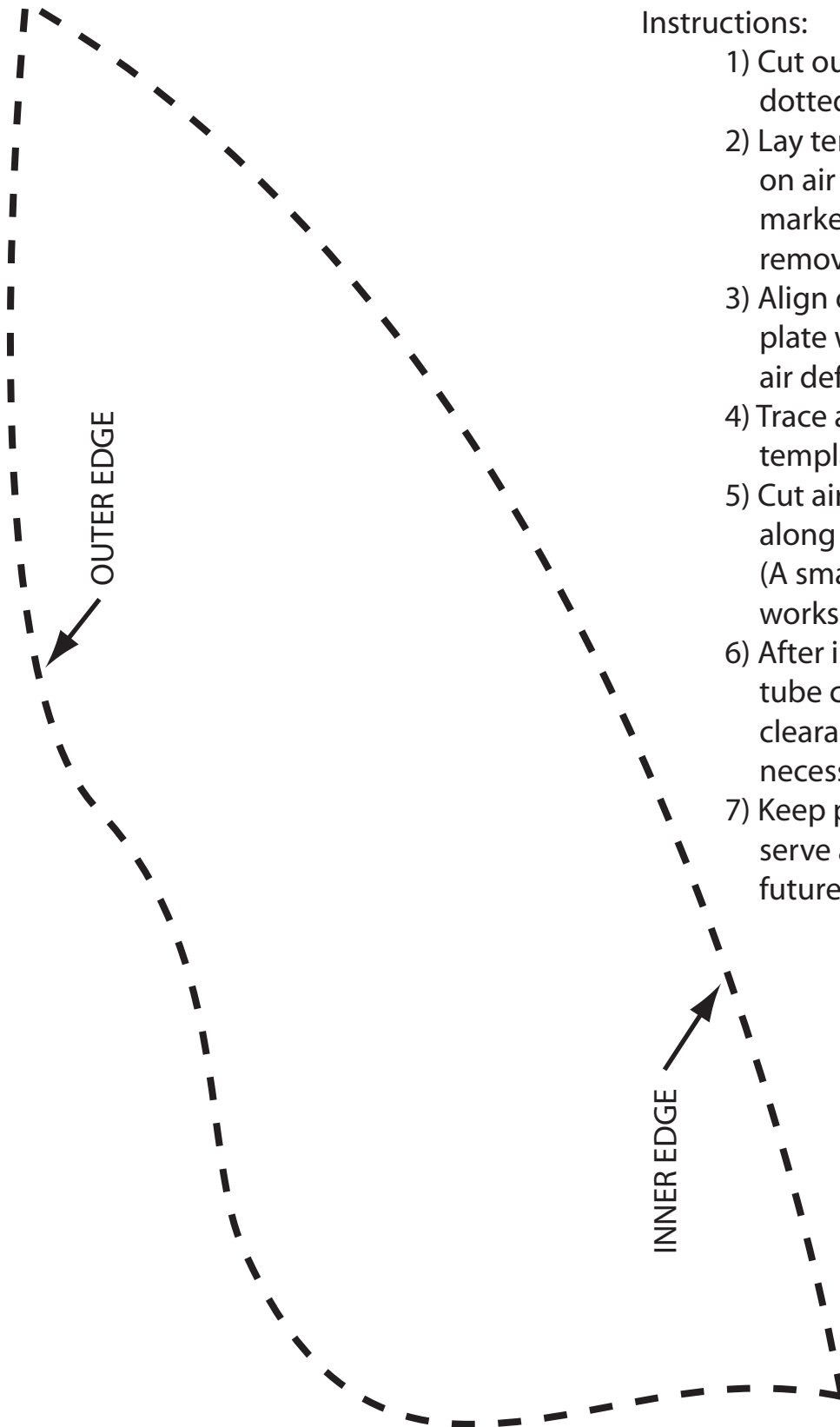
Clutch Pump Kit

Clutch Pump Kit
700421
Ford 6.0
Diesel
With A/C
2003-

INSTALLATION INSTRUCTIONS

1. Disconnect the battery.
2. Remove the air deflector shield from the top of the fan shroud.
3. Remove the OEM intercooler tube.
4. Remove the OEM belt. The tensioner has a spring to lock it open without any tension. Remove two bolts mounting the tensioner. Just let it lay against the shroud to allow room to mount the pump bracket.
5. Slip the small hose insulation sheath (14) over the pressure hose. Slip the large hose insulation sheath (15) over the suction hose. Place the sheaths where the hoses run close to the exhaust to protect the hoses from the heat. Fasten the sheaths to the hoses with the nylon cable ties (22). Route the hoses back to the firewall and down running them outside the frame.
6. Mount pump (4) onto bracket (1) with the two 3/8 x 1 1/4 bolts (9) with two 3/8 flat washers (10). Install the adapters into the inlet and outlet ports in back of the pump. Mount the clutch coil (5a) to the pump bracket with four 1/4 x 1/2 flange bolts (5b). Mount the clutch pulley (5c) to the pump shaft with the 5/16 x 1 1/4 bolt (5d) and heavy flat washer (5e) making sure the key is in place on the shaft.
7. Mount the bracket onto the engine with the four M10 x 45 bolts (7). Reattach OEM tensioner with the OEM bolts.
8. Mount the two idler pulleys (6) to the bosses on the pump bracket at Locations E and F with the M10 x 40 Torx® head shoulder bolts (8).
9. Install the belt (17) as shown in the diagram (Fig. 3). Release the lock on the tensioner to tighten the belt.
10. The deflector shield will need to be trimmed for clearance around the intercooler tube. See the separate template sheet included with the instructions (Fig. 4). Snap the shield into place making sure it does not make contact. See Fig. 2.
11. Install the DewEze intercooler tube (3) into the same location as the OEM tube was. It may be necessary to loosen the hose clamp on the rubber elbow on the turbo (Location H) so the elbow can be rotated to line up with the intercooler tube. Place the 2 1/2" clamp (12) around the intercooler tube. Insert one 1/4" flat washer (16) between the upper and lower tabs of the clamp and one washer on top. Secure the clamp with the 1/4" self-tapping screw (13) into the pump bracket at Location J. Tighten the OEM hose clamps.
12. Connect the hoses to the pump.
13. Reconnect the battery.
14. Run the engine and check for any clearance or alignment problems. Adjust as needed.

FIG. 4 TEMPLATE - FOR REMOVING CORNER OF AIR DEFLECTOR SHIELD
ON A FORD 6.0L DIESEL



Instructions:

- 1) Cut out template along dotted lines.
- 2) Lay template over area on air deflector shield marked in Figure 2 for removal.
- 3) Align outer edge of template with outer edge of air deflector shield.
- 4) Trace along inner edge of template with a marker.
- 5) Cut air deflector shield along the traced line. (A small cut-off wheel works well.)
- 6) After installing intercooler tube check for adequate clearance. Trim further if necessary.
- 7) Keep plastic cut-out to serve as a template on future installs.