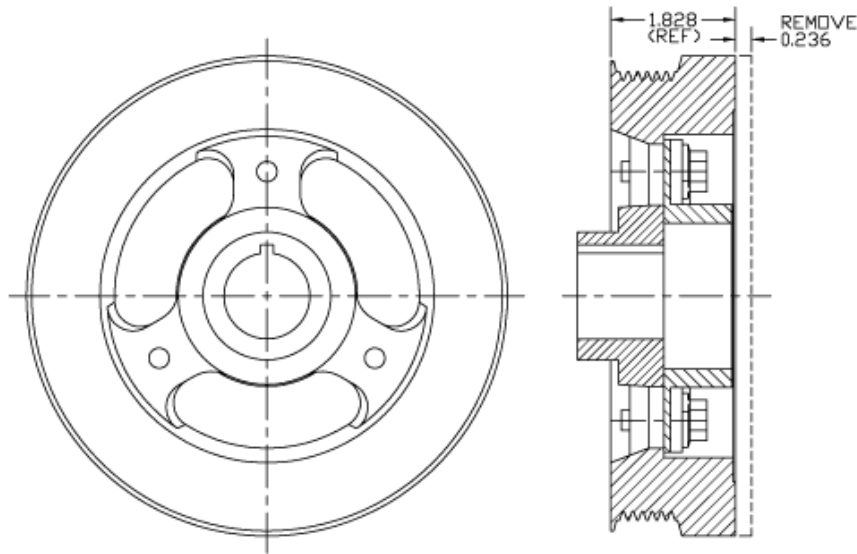


ATTENTION – CORE RETURN '05-'10 Ford 6.8L Crankshaft Pulley

The original pulley used on '05-'10 Ford 6.8L engines that is removed with the installation of a DewEze clutch-pump kit may be returned to the factory for credit. A credit of \$90.00 (less your customer discount) will be credited to your account when this part is returned in usable condition. Adequately package pulley to prevent damage in transit. Return freight is your responsibility. Please complete the form below and return a copy with the pulley within 90 days from purchase.



740400 Crankshaft Pulley (740399 – Unmachined)

Please fill out form completely.

Dealer Name _____ Date _____

CO Number _____

HII Dealer Customer Number _____ HII RGA Number _____

Please retain a copy of this form for your records.

If you have any questions, please call HII Service personnel (800-835-1042).

Harper Industries, Inc.

151 E Hwy 160

Harper, KS 67058

Ford, 6.8L:G, 2005+, F-450, F-550, w/Spider Kit, A Pump, 12, 17 GPM, Rear Port

Bolt Packages:

Bracket	711652 (Inc. Item 9, 15)
Idler pulley	711653 (Inc. Items 10, 15)
Pulley	None
Tensioner	None

Issue Date	10-22-04	Revision Date	F 12-6-11
------------	----------	---------------	-----------

Item Part No. Description

1.	711646	Engine bracket	13.	OEM	Bolt
2.	-----	-----	14.	-----	-----
3.	110780	Washer, M8 x .188"	15.	110676	3/8 Flat washer
4.	711648	Idler bushing, .200"	16.	740143	Idler pulley, 8-groove
5.	740261	Idler pulley, flat 3.00"	17.	110559	M8 x 1.25 x 40 Bolt
6.	740388	Tensioner assy, Inc. 4, 16, 17	18.	-----	-----
7.	*	Pump, A rear port	19.	740436	Spider drive
8.	742009	Clutch	20.	740400	Damper, crank
9.	110292	M8 x 1.25 x 120 Bolt	21.	120388	Adapter, 8MJIC-18 Metric 90
10.	110282	M10 x 1.5 x 20 Bolt	22.	722005	Hose, power steering
11.	110425	3/8-16 x 1 1/4 Bolt	23.	740280	Belt, Micro-V K080716
12.	110747	M12 x 1.75 x 75 Bolt			

* See pump list for sizes and part numbers.

FIG. 1
BELT DIAGRAM

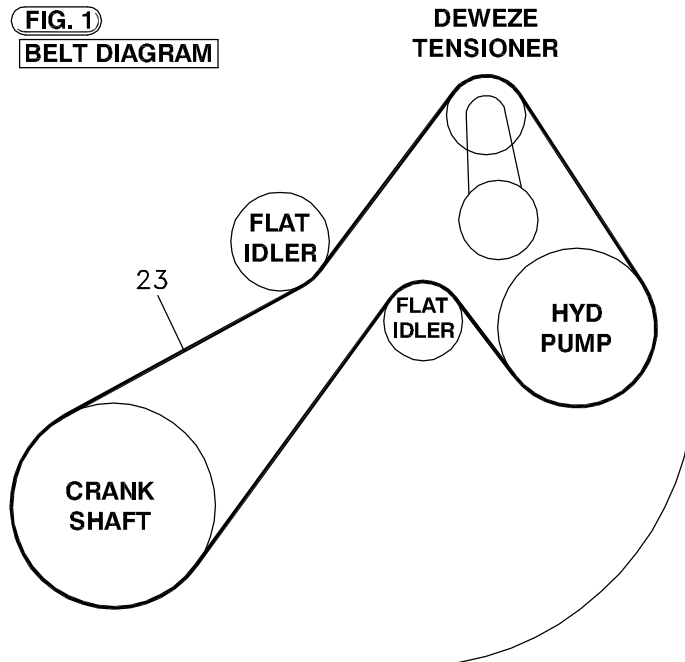


FIG. 2
POWER STEERING HOSE MODIFICATION



LINE FARTHEST FROM ENGINE IS UNMODIFIED

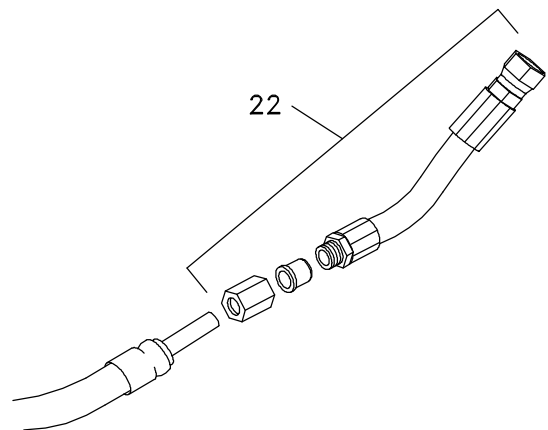
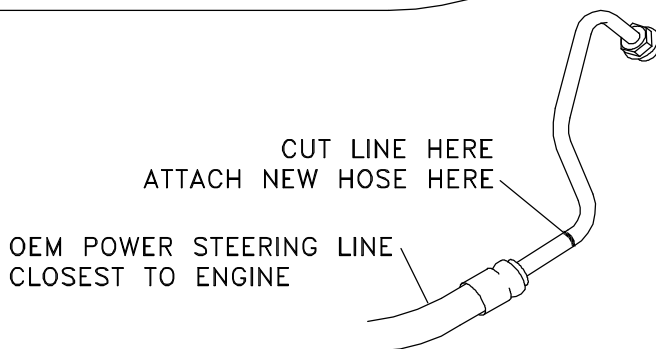
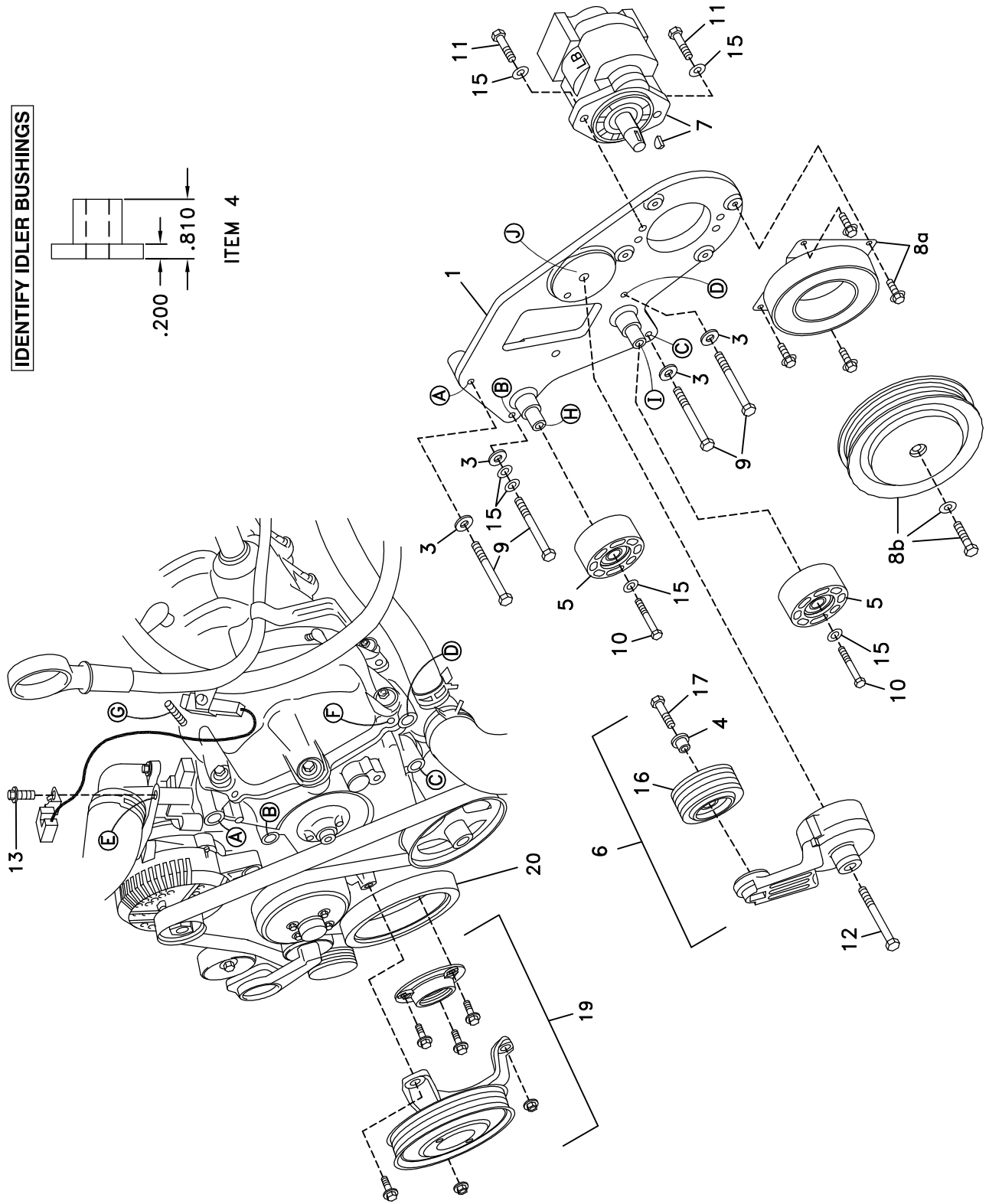
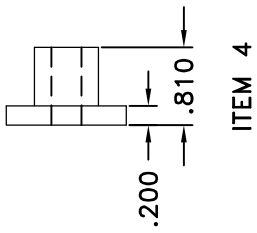


FIG. 3

IDENTIFY IDLER BUSHINGS



DewEze

Clutch Pump Kit

Clutch Pump Kit
700434
Ford 6.8
F-450, F-550
Spider drive
2005+

INSTALLATION INSTRUCTIONS

1. Disconnect the battery.
2. Remove the air cleaner assembly.
3. Drain the radiator. Remove the top radiator hose.
4. Remove the fan and shroud.
5. Remove the three OEM stud bolts from Locations A, C, and D. Remove one OEM bolt from Location B.
6. Remove the OEM bolt (13) from the front of the thermostat housing (Location E), place the OEM electrical wire as shown there and fasten with the OEM bolt.
7. Remove the wiring harness from the attachment points on the valve cover at the front corner (Location F) and the stud bolt under the air tube (Location G). Push the wiring harness back on top of the valve cover to clear the pump and bracket.
8. Refer to Fig. 2: Clamp off the large suction hose coming from the power steering reservoir. This will keep the fluid from running out the ports when the lines are loosened. Remove both lines from the top of the power steering box for easier access. On the hose that was closest to the engine, cut the steel line just at the start of the first bend from the end of the hose. Slide the nut, then the ferrule onto the tube and attach that to the new hose (24). Thread the adapter (23) into the steering box pointing it down toward the front of the truck. Thread the other end of the hose into the adapter. Replace the OEM line farthest from the engine without modification. Tighten all connections. Remove the clamp.
9. Install the crank damper (20) and spider drive (19). Replace the OEM water pump with the new water pump with extended hub, using the original water pump pulley over. Refer to the separate sheets for these procedures.
10. Attach the pump (7) to the back of the pump plate (1) using two 3/8 x 1 1/4 bolts (11) and two 3/8 flat washers (15).
11. Attach the clutch coil (8a) to the front of the pump plate using the four 1/4 x 1/2 flange bolts provided with the clutch. Attach the clutch pulley (8b) to the pump shaft using the 5/16 x 1 1/4 bolt and heavy flat washer provided with the clutch.
12. Place the 8-groove idler pulley (16) on the boss on the tensioner arm. Insert the idler bushing (4, .200" flange) into the center of the idler. Hold it on with the M8 x 40 bolt (17). Place the tensioner spacer (2) on the pump plate at Location J inserting the pin into the hole in the plate. Place the tensioner (6) on the spacer using the M12 x 75 bolt (12) placing the locating pin in the hole in the spacer.
13. Attach the pump plate to the engine at Locations A, B, C, and D using four M8 x 120 bolts (9) with one .188" thick washer (3) on each bolt and two standard 3/8" flat washers (15) on the bolt at Location B only.
14. Attach one flat idler (5) to the plate with the M10 x 20 bolt (10) and 3/8 flat washer (15) at Location H. Attach the other flat idler (5) with an M10 x 20 bolt (10) and 3/8 flat washer (15) at Location I.
15. Install the new serpentine belt (23) as shown in Fig. 1. **Check to be sure the belt does not contact the airbox. If it does, remove the airbox and loosen the bolt where the support rod attaches to the airbox bracket. Pull the bracket toward the driver's side fender as far as it will go and tighten the bolt. Replace the airbox.**
16. Replace the fan and shroud.
17. Replace the radiator hose and the coolant.
18. Connect the battery.
19. Run the engine and check for any clearance or alignment problems. Adjust as needed.