

### Metric Units

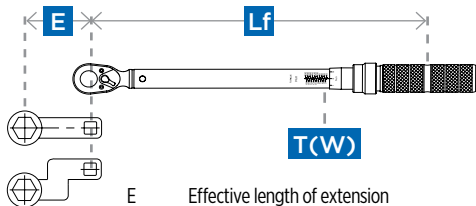
Main Torque Range	Secondary Torque Range	Square Drive	Fine Scale	Length (mm)	Width (mm)	Lf (mm)
5-25N-m	39.8-225.7 In-lb	1/4"	0.1 N-m	245	27.3	195.2
20-100N-m	9.2-75.6 Ft-lb	3/8"	0.5 N-m	410	36.4	329.5
40-200N-m	18.4-151.2 Ft-lb	1/2"	1 N-m	520	41	435
60-340N-m	36.9-258.1 Ft-lb	1/2"	2 N-m	610	41	525
110-550N-m	83-414.9 Ft-lb	3/4"	2.5 N-m	925	58	831.8
150-750N-m	92.2-571.6 Ft-lb	3/4"	5 N-m	1125	58	1031.8
200-1000N-m	92.2-756 Ft-lb	1"	5 N-m	1225	67	1127.6

### Imperial Units

Main Torque Range	Secondary Torque Range	Square Drive	Fine Scale	Length (mm)	Width (mm)	Lf (mm)
20-250 In-lb	2.8-28.8 N-m	1/4"	1 In-lb	245	27.3	195.2
10-80 Ft-lb	17-111.8 N-m	3/8"	0.5 Ft-lb	410	36.4	329.5
10-150 Ft-lb	20.3-210.1 N-m	1/2"	1 Ft-lb	520	41	435
30-250 Ft-lb	47.4-345.7 N-m	1/2"	2 Ft-lb	610	41	525
50-400 Ft-lb	84.7-559.2 N-m	3/4"	2.5 Ft-lb	925	58	831.8
100-600 Ft-lb	152.5-830.3 N-m	3/4"	2.5 Ft-lb	1125	58	1031.8
100-800 Ft-lb	169.5-1118.4 N-m	1"	5 Ft-lb	1225	67	1127.6

## CALIBRATION FORMULA

When using special attachments with the torque wrench (such as tightening thread connectors), use the following formula for proper recalibration.



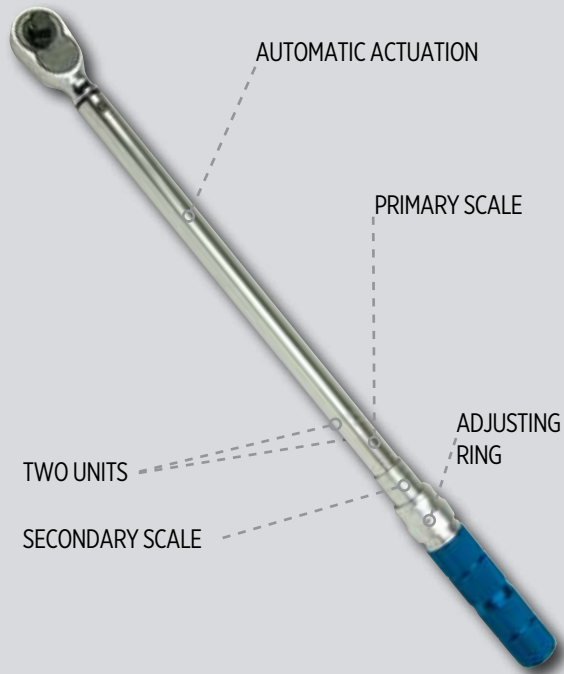
- E Effective length of extension  
Lf Lever length of the wrench: middle of handle to center of square drive  
T(W) Torque setting on the wrench  
T(A) Torque applied by the extension to the fastener
- $$T(A) = T(W) \times \frac{L_f + E}{L_f}$$

**Ken-Tool**  
WHEREVER TIRES ARE CHANGED™

**INDUSTRIAL  
TORQUE  
WRENCH**

**PN 30532**

**1/2" Drive 30-250 Ft LB**



AUTOMATIC ACTUATION

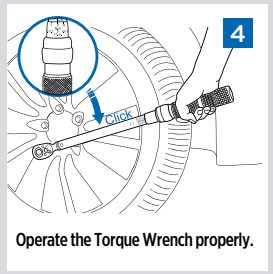
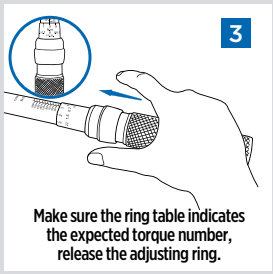
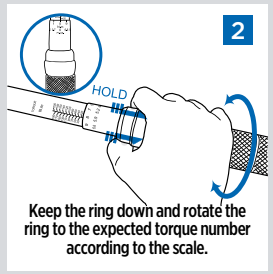
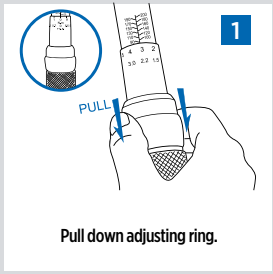
PRIMARY SCALE

ADJUSTING RING

TWO UNITS

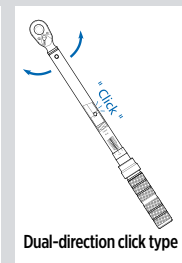
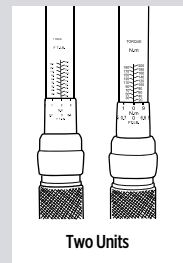
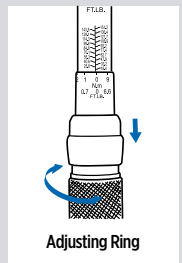
SECONDARY SCALE

## OPERATING INSTRUCTIONS



## TORQUE WRENCH TIPS

### FEATURE



### NOTE

