



# Clutch Pump Kit

KIT NUMBER  
**700562**

## Ram, Cummins 6.7L:D, 2013+, A/C, PH14 Pump

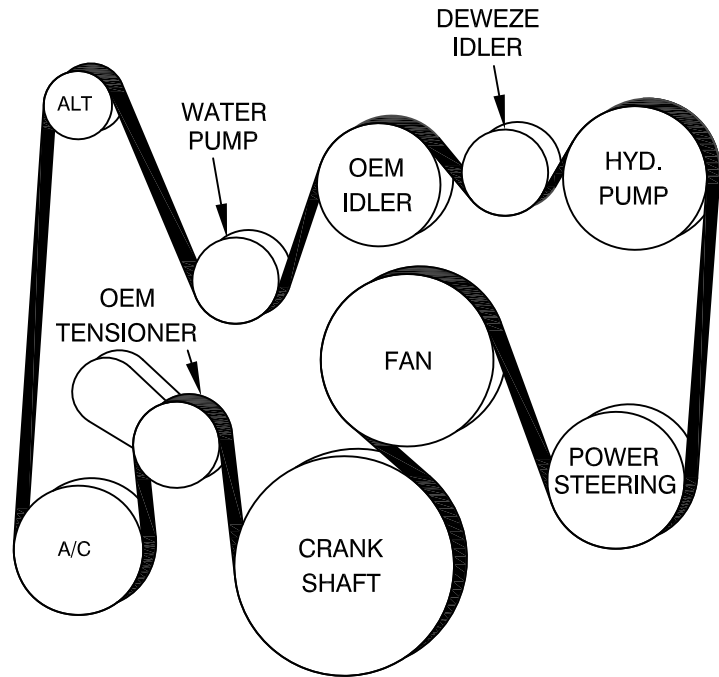
BOLT PACKAGES:					
BRACKET	716170 (Inc. items 10-12, 14, 15, 19,)		702141	BELT DIAGRAM	
IDLER PULLEY	716181 (Inc. items 2, 16-18)				
CRANK PULLEY	None				
TENSIONER	None				
FAN SPACER	None	6-11-13	ISSUE DATE	A	7-24-13
				REVISION DATE	

**Item** | **Part No.** | **Description**

1.	716169	Pump plate	12.	102083	Clamp, .25 ID x 75 wide
2.	716182	Idler mount bracket	13.	OEM	Coolant hose clamp
3.	716158	Coolant hose bracket	14.	112072	M10 x 1.5 x 40 Flange bolt
4.	-----	-----	15.	102036	Hose clamp
5.	-----	-----	16.	112077	M8 x 1.25 x 30 Flange bolt
6.	-----	-----	17.	110737	M8 x 1.25 x 70 Bolt
7.	740242	Idler pulley, DewEze	18.	112075	M8 Flat washer
8.	*	Pump	19.	112071	M8 x 1.25 x 50 Flange bolt
9.	742009	Clutch	20.	110440	3/8-16 x 1 Flange bolt
10.	112073	M6 x 1.0 x 16 Flange bolt	21.	740263	Belt, Poly Cog 1380K8BK
11.	112074	M6 x 1.0 Flange nut	22.	102059	Cable tie, .5" x 20"

\*Part number to be determined at time of order.

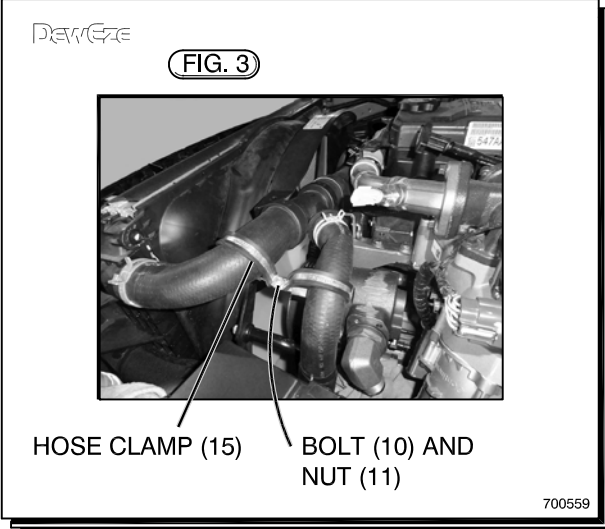
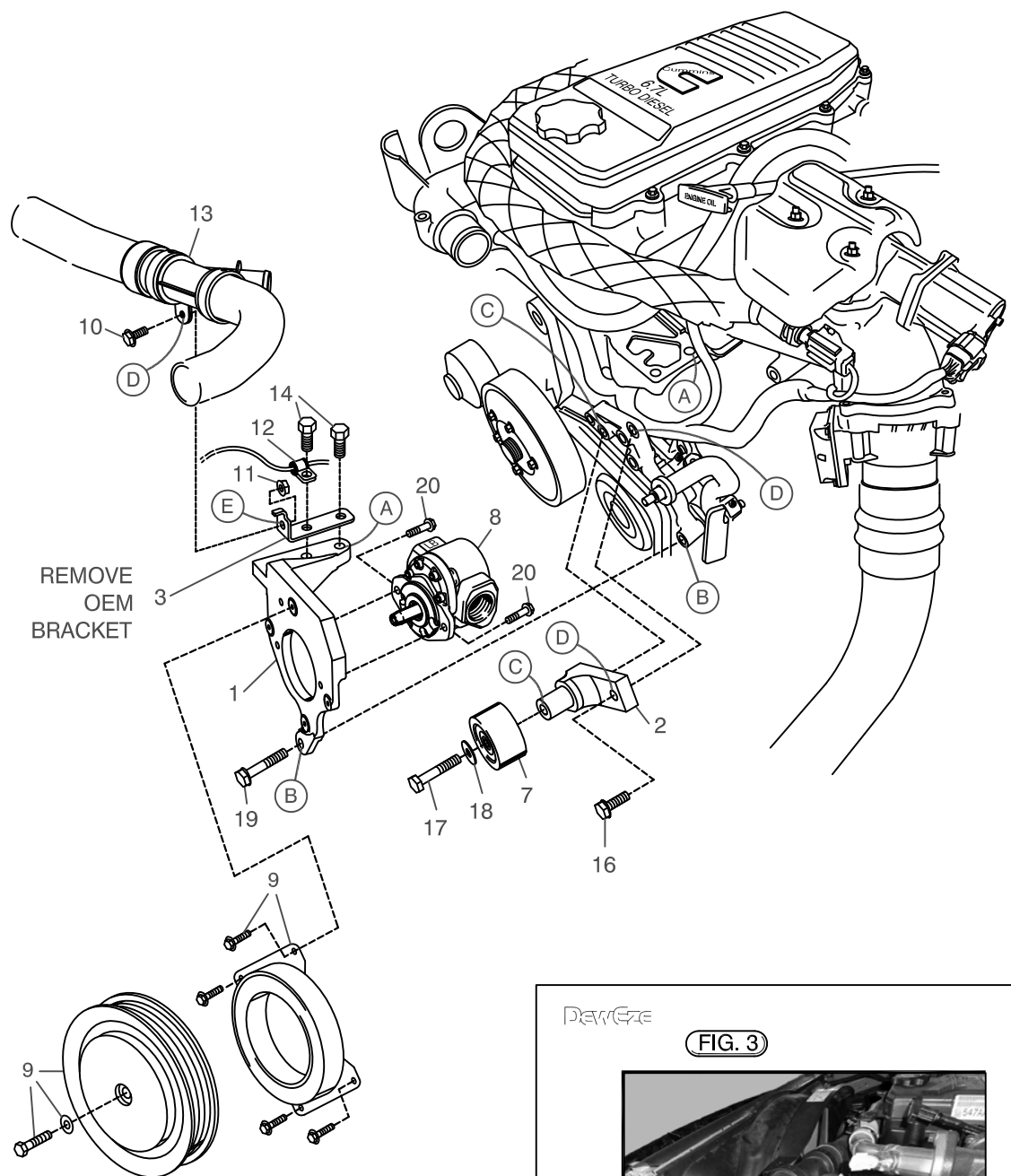
**FIG. 1**  
**BELT DIAGRAM**



harperindustries.com



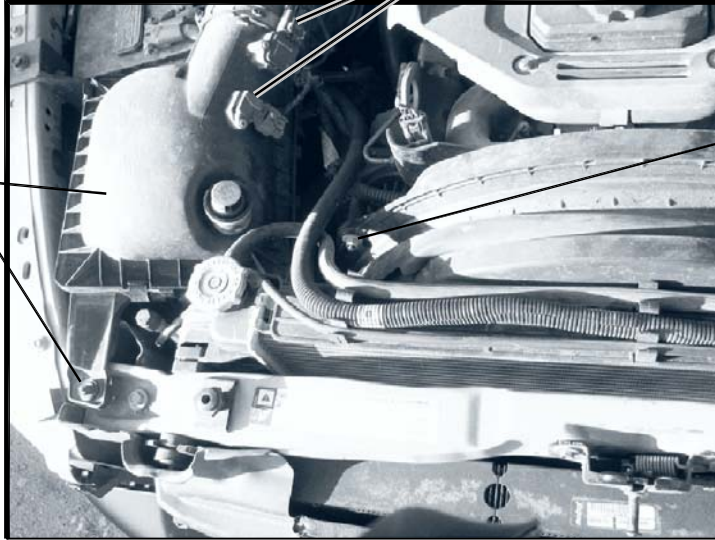
**FIG. 2**





DewEze

**FIG. 4**



AIR BOX

AIRBOX WIRING  
PLUG-INS

SHROUD MOUNT NUT  
LEFT SIDE

700562

DewEze

**FIG. 5**



WIRING HARNESS  
AND CLIP

SHROUD MOUNT NUT  
RIGHT SIDE

700562

# DewEze Clutch Pump Kit 700562

Cummins 6.7L, 2013+, PH14 Pump: 12, 17 GPM

## INSTALLATION INSTRUCTIONS

Record Pump Model No. \_\_\_\_\_ and Serial No. \_\_\_\_\_ for future reference.

Left and right directions are standing in front of the truck looking at the engine.

- The installation of this kit requires trained decision-making concerning clearances, tying components together, rerouting, or relocating OEM components, etc. It is impossible to describe all of the clearance and vibration points, etc. in the installation instructions. Therefore, the technician must exercise professional judgment to achieve the best quality installation.***
- Disconnect the battery.
- Disconnect wiring plug-ins from air box. Remove air box. Fig. 4.
- Remove the OEM belt.
- Remove the OEM coolant hose bracket (similar to DewEze item 3).
- Install the idler (7) with the idler mounting bracket (2), M8 x 70 bolt (17) and M8 flat washer (18) at Location C and M8 x 30 bolt (16) at Location D on the engine front cover.
- Install DewEze belt (27) on the OEM pulleys. It is easier to access the pulleys before the pump is installed.
- Bolt pump (8) onto pump plate (1) with two 3/8 x 1 flange bolts (20).
- Run the hoses into the engine compartment. Pull them out far enough to attach them to the pump.
- Place the new coolant hose bracket (3) on top of the two holes on the pump bracket (1) at Location A, and the small wire clamp (12) with the clutch wire run through it on top of that on the front hole. Attach the top of the pump bracket (1) to the engine at Location A using two M10 x 40 bolts (14). Attach the bottom of the pump bracket to the power steering bracket at Location B with the M8 x 50 bolt (19).
- Attach coil (9) with four 1/4 x 1/2 flange bolts. Torque these to 6 ft-lb. Attach clutch pulley (9) to pump shaft with 5/16NF x 1 1/4 bolt and heavy washer. Torque to 14 ft-lb.
- Attach the OEM coolant hose clamp (13) to the DewEze clamp bracket (3) with the M6 x 16 bolt (10) and the M6 nut (11) at Location E.
- Finish installing the belt (27) onto the pump pulley as shown in the diagram (Fig. 1).
- Place the two hose clamps (15) around the coolant hoses that are connected to the 'Y' fitting, pointing the clamps toward each other. Attach them together with a M6 x 16 bolt (10) and M6 nut (11).
- Install air box. Install intercooler cover. Connect battery.
- Run the engine and check for any clearance or alignment problems. Use the cable ties to tie back any cables or hoses that come in contact with hot or moving components. Re-examine the power steering lines for clearance as the engine torques. Adjust as needed.