

**NEW**

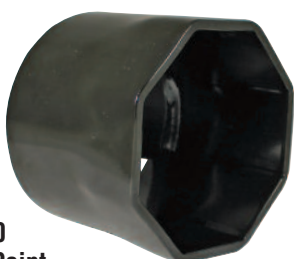
**Ken-Tool®**

# AXLE NUT SOCKETS

The 5 most common axle nut sizes for Ford, Dodge, Toyota and GM vehicles!



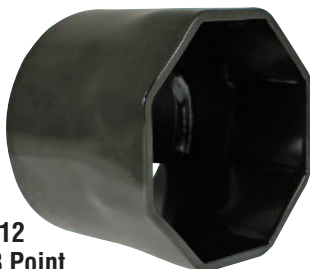
**30410**  
3.25" 8 Point



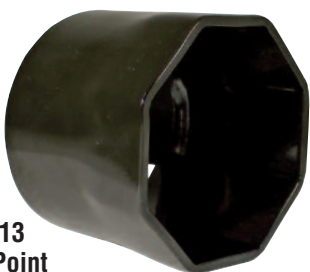
**30411**  
3.5" 6 Point



**30412**  
3.75" 8 Point



**30413**  
4" 6 Point



**30414**  
4.375" 8 Point



*Available as individual sizes  
and as a full set!*

- Each socket is made from cold pressed tool steel and made proudly in the USA
- 6 point and 8 point designs have tight tolerances that grip axle nuts firmly to resist rounding out
- 1/2" drive designed to be used with torque wrench and hand tools
- Stamped sizes are easy to read
- Black e-coat surface protects against corrosion and wear

Item No.	Description	Weight
30410	3.25" 8 pt. Axle Nut Socket	2.7 lbs (1.2 kg)
30411	3.5" 6 pt. Axle Nut Socket	2.95 lbs (1.3 kg)
30412	3.75" 8 pt. Axle Nut Socket	3.15 lbs (1.4 kg)
30413	4" 6 pt. Axle Nut Socket	3.35 lbs (1.5 kg)
30414	4.375" 8 pt. Axle Nut Socket	3.5 lbs (1.5 kg)
30415	5 Piece Axle Nut Socket Set* Set includes: 30410, 30411, 30412 30413, 30414, 30415	16 lbs (7.2 kg)

\*Set ships in poly bags individually in a standard carton

