

CRITICAL PART

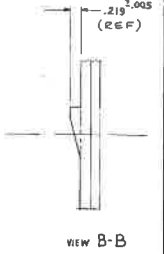
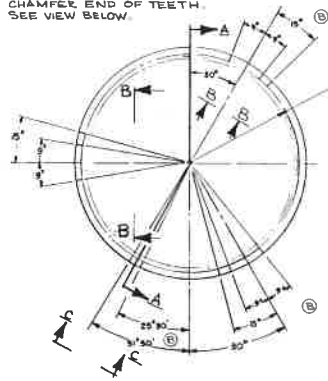
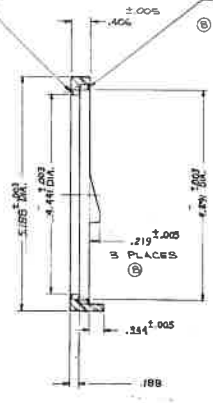
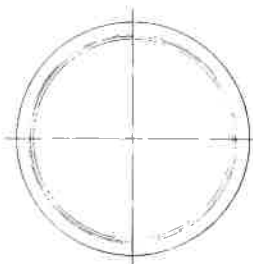
REV	DESCRIPTION	DATE	BY	CHK
B	RELEASE FOR PROD.			
C	FN-0208-38 WFS			
	FN-0208-12			

NOTE:
CLOCK BOTH SETS OF SPLINE TEETH SO
THAT THE TEETH STRADDLE THE ϕ

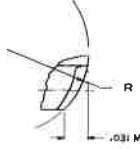


77 TEETH, 16/32 D.P., 30° P.A., CLASS
ACCORDING FIT; FILLET ROOT, SIDE FIT,
INTERNAL INVOLUTE SPLINE, PITCH DIA.
4.500, MEASURE 4.3542±.003 BETWEEN
.108 DIA PINS.
CHAMFER NEAR END
TEETH ONLY, SEE VIEW BELOW.

76 TEETH, 16/32 D.P., 30° P.A.,
CLASS ACCORDING FIT; FILLET ROOT, SIDE FIT,
INTERNAL INVOLUTE SPLINE,
PITCH DIA. 4.750, MEASURE
4.604±.001 BETWEEN .108 DIA PINS.
CHAMFER END OF TEETH.
SEE VIEW BELOW.



VIEW SHOWING CHAMFER
DETAIL ON SPLINE TEETH.
(NO SCALE)



CHAMFER TEETH AS SHOWN
TELL RADIUS FROM ROOT LINE OUT.
(FLAT CHAMFER IF FLAT ON END
OF TEETH PREFERRED)

SECTION A-A

© MATERIAL: P/M NICKEL STEEL PER
MPIF SPECIFICATION
FN - 0208 - 35

.406 (REF)

.344 (REF)

VIEW C-C

477002	RING BEAR LOCK	NOTED
LIST OF MATERIAL		
INCH TOLERANCES UNLESS OTHERWISE SPECIFIED	NAME DATE	TITLE
± .001	REVISOR	RING BEAR LOCK-12 V DC ELECTRIC PLANETARY
± .002	APPROVED	
ANGULAR ± 0° 30' UNLESS OTHERWISE SHOWN	DATE	
1/8	110801	
MFG - 65450		477002

